

# TUSSOCK TIMES

## INSIDE THIS ISSUE

VSTWP LAUNCH MT EGERTON PROJECT

LANDCARE GRANTS FOR FIELD DAYS

MAPPING SERRATED TUSSOCK USING DRONES?

WINTER TUSSOCK TIPS

STATE GOVERNMENT RAMPS UP THE TUSSOCK BATTLE



*Serrated tussock infestation from nearby Morrisons.*

*(Source: Roger MacRaid)*

## VSTWP LAUNCH MT EGERTON PROJECT

**VSTWP Extension Officer Roger MacRaid has successfully launched the Mt Egerton Extension Project and is aiming to educate and build the capacity of landowners in the area to manage serrated tussock infestations.**

The Mt Egerton project area covers a few thousand hectares of mostly rural farming land, along with some forested areas. For the Mt Egerton to Mt Doran part of the world, the VSTWP believe that prevention and containment are a necessary investment.

Roger has found small pockets of infestations right through to Lal Lal, but not much further.

“Management of these infestations will not only minimise the impact on the local landscape and community, but also help prevent serrated tussock from spreading further across the state” noted MacRaid.

The Mt Egerton target area is demonstrating that serrated tussock should not be underestimated. The conventional wisdom is that serrated tussock is unlikely to invade areas of remnant vegetation, but several patches have been found right in heavily wooded areas of the Bungal State Forest, both in the Little Forest area and in the Whipstick Scrub.

*(continued on page 2)*



## VSTWP LAUNCH MT EGERTON PROJECT. . . *(continued)*

Roger MacRaild said "Several of the smaller infestations appear to have come from a vehicle or are in a camping area". "This highlights the need for awareness of vehicle hygiene practices. It does appear that this has been a slow process of invasion, but if not treated these patches will continue to be a seed source for the surrounding district" noted MacRaild.

Landowners were treated to an informative project launch, with complimentary egg and bacon sandwiches and an array of information on how to

best identify and manage serrated tussock. Roger will be offering free property assessments over the next 6 months to landowners in the target area and will be visiting all properties to offer the free services and expert advice.

For more information about this extension project, or any of the projects the VSTWP are implementing, please visit [www.serratedtussock.com](http://www.serratedtussock.com) and explore what is being done in 2015.

## LANDCARE GRANTS FOR FIELD DAYS

The VSTWP has developed a Landcare Field Day Grants program that aims to help groups host a serrated tussock related field day. This program offers Landcare groups/networks the opportunity to receive a one off grant of up to \$500 to sponsor the convening of serrated tussock focused field days.

The grant is available to any Landcare group that is incorporated and appropriately insured for such events, and will be useful in raising the awareness of landowners and managers about the threat posed by this noxious weed.

To further support the field day, the VSTWP will provide extension material on serrated tussock identification and management, and offer the presence of a VSTWP Extension Officer to impart serrated tussock education and management advice.

For further information or to obtain a copy of the guidelines and application form please visit the news articles section of our website [www.serratedtussock.com/?q=news-articles](http://www.serratedtussock.com/?q=news-articles)

We look forward to working with you to build the capacity of communities to identify and manage serrated tussock.



*Field days are a great way to get neighbours talking about management options and solutions to the serrated tussock problem.*

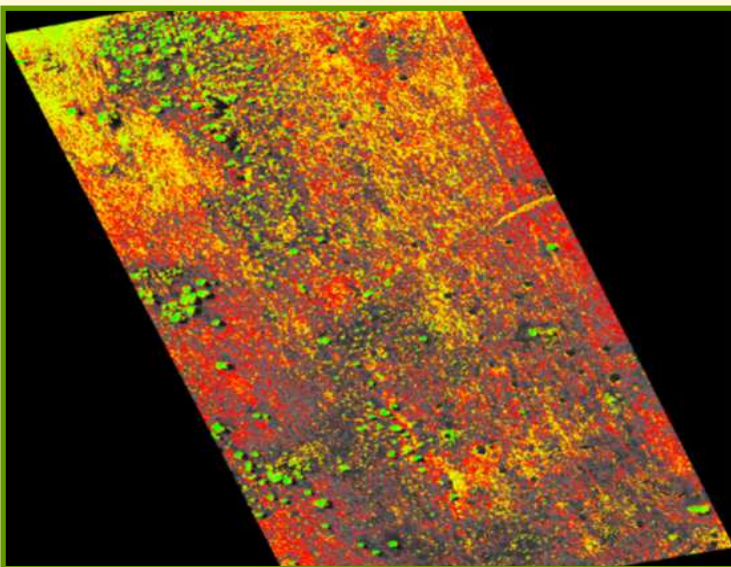
*(Source: VSTWP)*

# MAPPING SERRATED TUSSOCK USING DRONES?

**In recent months we have been hearing about successful trials investigating the use of unmanned aerial vehicles (drones) for the mapping of weed infestations. Whilst it is still to be determined whether this technique would be suitable and cost effective for mapping serrated tussock, an exciting future awaits as the technology advances at a rapid rate.**

The advantage of mapping using drones is that the detection of noxious weeds and plants in the landscape using aerial imagery can be quicker and simpler than trying to map using traditional methods.

The application of unmanned aerial vehicles in the agricultural industry is a growing business. There are a number of companies in Australia that offer landowners services such as unmanned aerial vehicle mapping and aerial photography. An example of its application in cropping situations includes using an infra-red camera to differentiate weed species from crop, as different plants species reflect different infra-red light. The differences in the reflected light can be observed on an aerial photograph while the location of the weeds can also be linked to a GIS point.



*This image was produced from a recent trial in Tasmania. The yellow/mustard colour indicates serrated tussock plants.*

Based on current mapping evidence from recent serrated tussock trials in Tasmania (see map below left), the VSTWP believe this technique could possibly enable landowners/extension officers to make informed decisions and take targeted action without physically having to always traverse the ground.

For the VSTWP to make a valuable judgement on this technique, we would need to test its ability to produce accurate serrated tussock mapping data and to trial whether this technique would save time and be cost effective.

## WINTER TUSSOCK TIPS

- ◆ Work on establishing or renovating strong, competitive pastures.
- ◆ Cultivate arable areas with suitable crops to outcompete serrated tussock.
- ◆ Chip out isolated serrated tussock plants.
- ◆ There is little plant growth in winter, Glyphosate\* herbicide based products will not be as effective during winter.
- ◆ Flupropanate\* can be an effective herbicide in winter. When applying, be sure to allow enough time for it to take effect before plants begin to seed in late spring.

\* Always read and follow all label directions and material safety data sheets before use.



## DEDJTR RAMPS UP THE TUSSOCK BATTLE

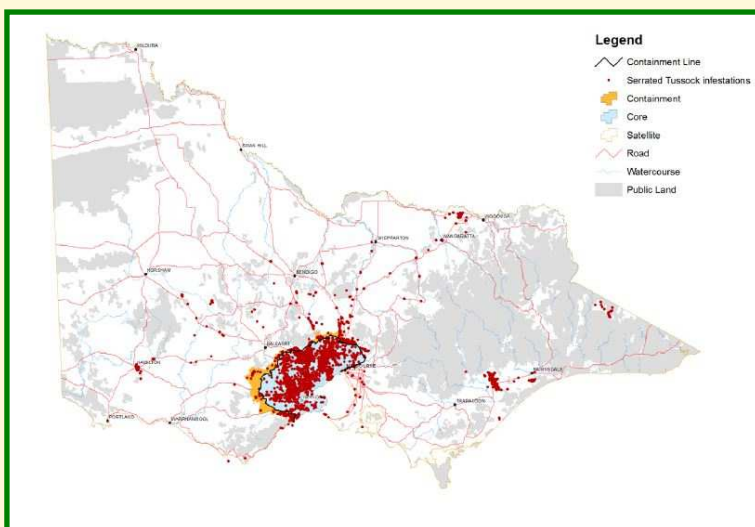
In 2014/15 the Department of Economic Development, Jobs, Transport and Resources (DEDJTR) completed 21 projects focused on serrated tussock.

These projects focused on developing and maintain the containment line as well as managing isolated infestations beyond the containment line.

DEDJTR officers inspected 821 properties, over 65,040 hectares of land. Landowners of 86 properties were issued with notices outlining the steps required to manage serrated tussock. The response from landowners was positive, with the majority of them complying.

DEDJTR has already commenced serrated tussock projects for the 2015/16 period, with priority focused on isolated infestations occurring outside of the containment line.

On the map below the containment line is coloured in yellow, and the locations of the serrated tussock infestations across Victoria are indicated by the red dots.



*DEDJTR map of serrated tussock across Victoria and the isolated infestations outside the containment line*

(Source: DEDJTR)

## CONTRIBUTIONS AND FEEDBACK

The VSTWP would like to thank the following people for contributing to this edition of the Tussock Times.: Ivan Carter (VSTWP) Mandy Coulson, (VSTWP), Roger MacRaid (VSTWP) and Paul Major (DEDJTR).

The Victorian Serrated Tussock Working Party welcomes your contributions and feedback.

For contributions, feedback or to be added to or removed from the mailing list, please contact:

VSTWP Executive Officer  
Phone: (03) 5366 0000  
Email: [info@serratedtussock.com](mailto:info@serratedtussock.com)

In our efforts to reduce the number of newsletters being printed if you currently receive a hardcopy of this newsletter but have access to email please send your email address to the Executive Officer.

More information on serrated tussock can be found on the Victorian Serrated Tussock Working Party website: [www.serratedtussock.com](http://www.serratedtussock.com) or by contacting the DELWP Customer Service Centre on 136 186.

Published by the Victorian Government Department of Economic Development, Jobs, Transport and Resources - Agricultural Services Grampians region, and the Victorian Serrated Tussock Working Party.

Bacchus Marsh Victoria, Australia July 2015.

© The State of Victoria, Department of Economic Development, Jobs Transport and Resources, 2015.  
The Victorian Serrated Tussock Working Party, 2015

This publication is copyright. No part may be reproduced by any process except in accordance with the provisions of the Copyright Act 1968.

ISSN 1836-8158 (Print)

ISSN 1836-8166 (Online)

Disclaimer: This publication may be of assistance to you but the State of Victoria and its employees do not guarantee that the publication is without flaw of any kind or is wholly appropriate for your particular purposes and therefore disclaims all liability for any error, loss or other consequence which may arise from you relying on any information in this publication.

If you would like to receive this information/publication in an accessible format (such as large print or audio) please call the Customer Service Centre on 136 186, TTY 1800 122 969